

bmfabrics



foundation collection



HARMONY
colour A7

FOUNDATION

The global crises of the moment make us return to the fundamentals of life in 2023: sleep, nutrition, personal care, enrichment of the mind... Look around you, observe and get rid of everything superfluous. This focus on the essentials in life also translates into design, we opt for simplicity, sustainability and functionality.

Such simplicity is reflected in the choice of materials. We go back to clay, wood, enamel and sustainable fibers such as sisal, jute and hemp. We also opt for natural color tones or materials in their natural state, such as raw linen and cotton.

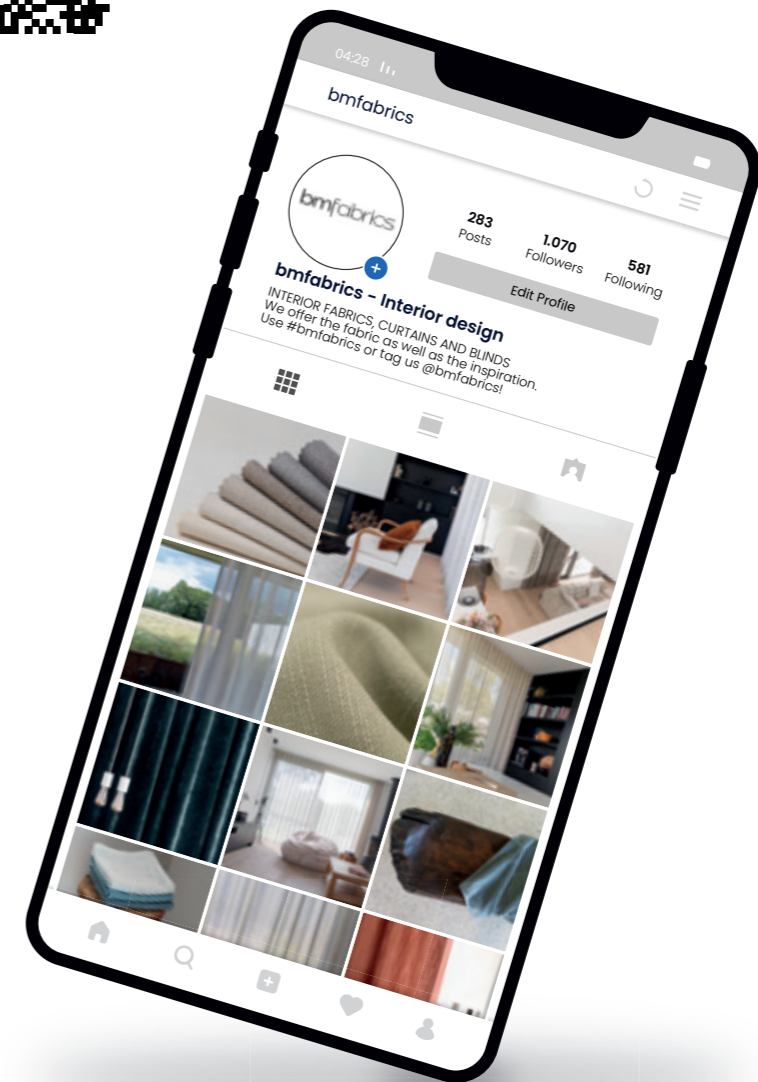
Within our collection, this will translate into earthy color tones as inspiration. Thyme green and rusty brown, as well as softer basics such as loamy beige and clayey greys.

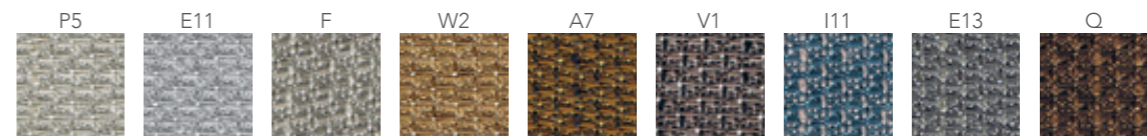
RISE
colour O6



Follow us online

Quickly scan this QR code and immediately end up on our Instagram account





HARMONY
↑ 300 cm

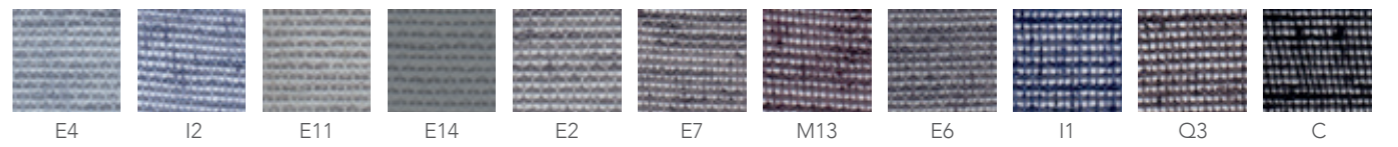
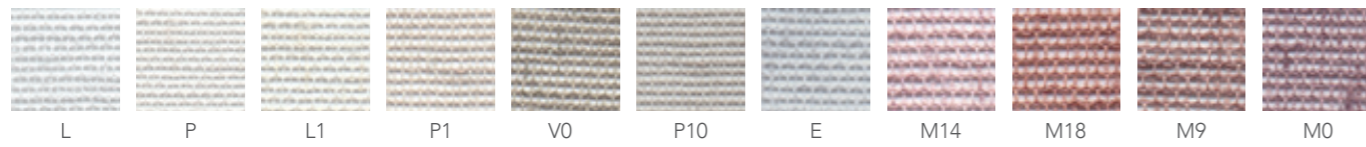


HARMONY
colour A7

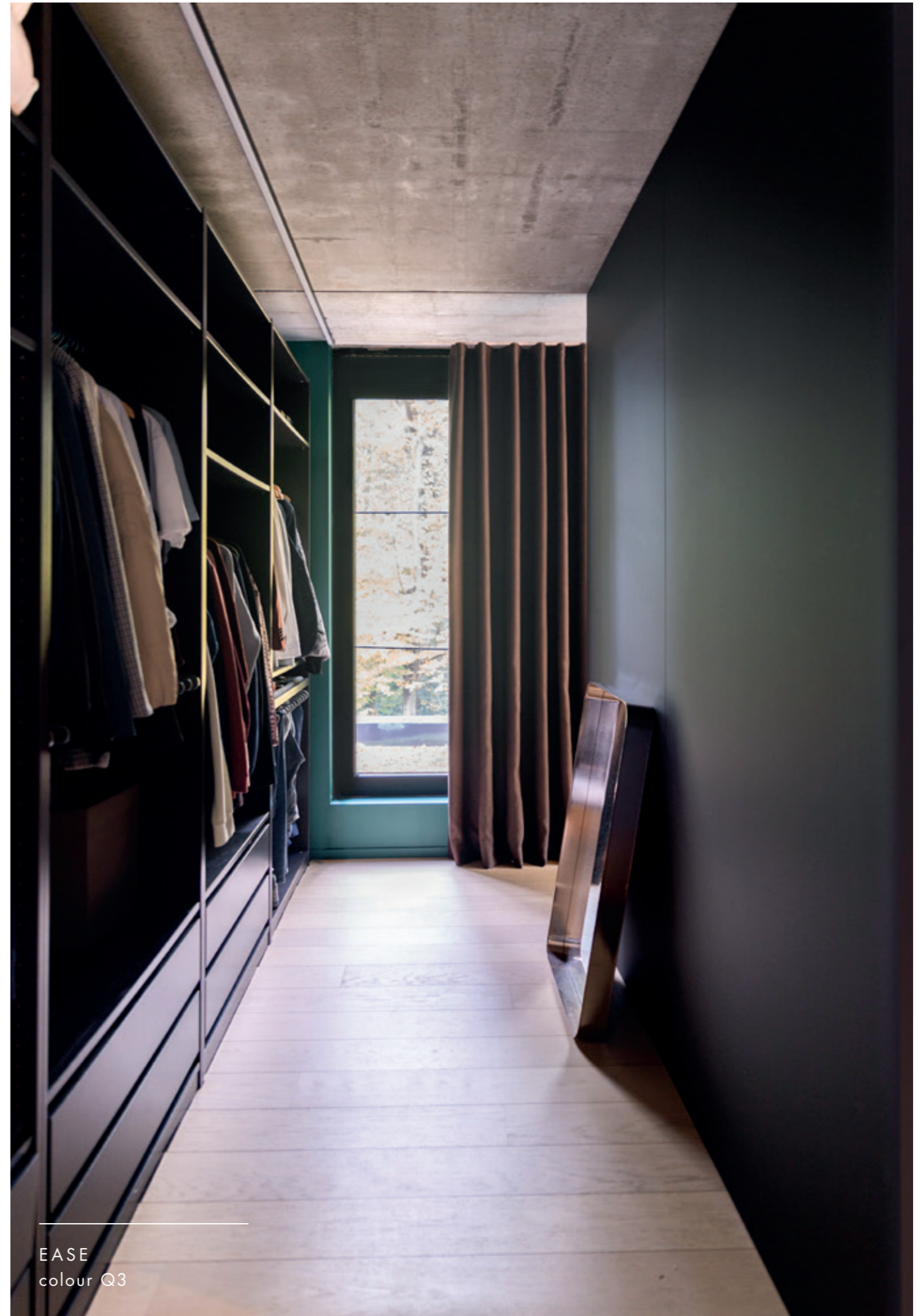
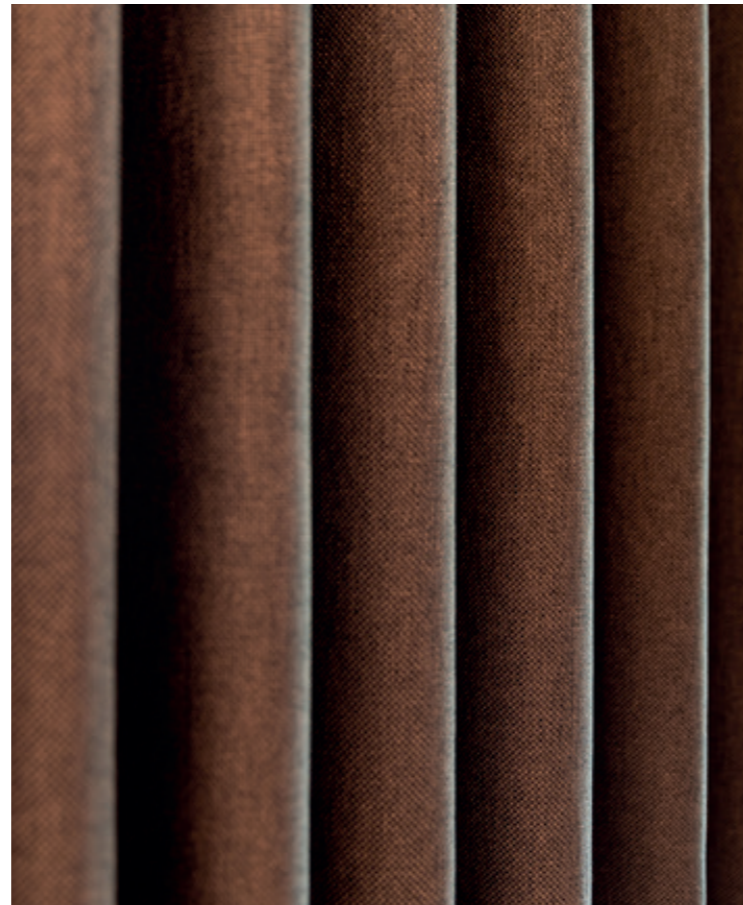
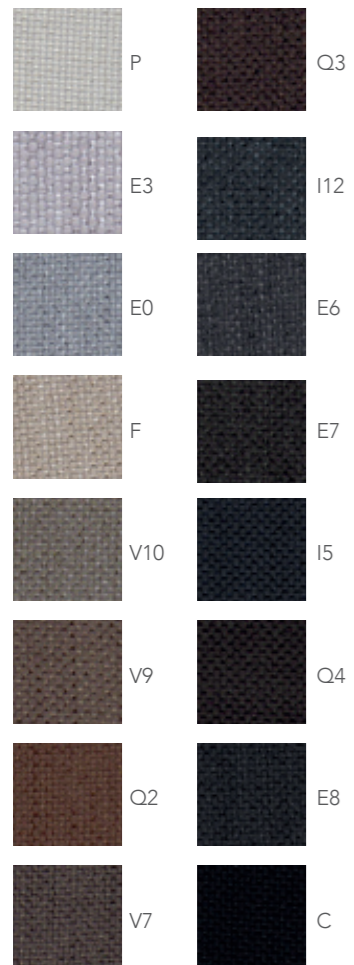




ROOT
 340 cm



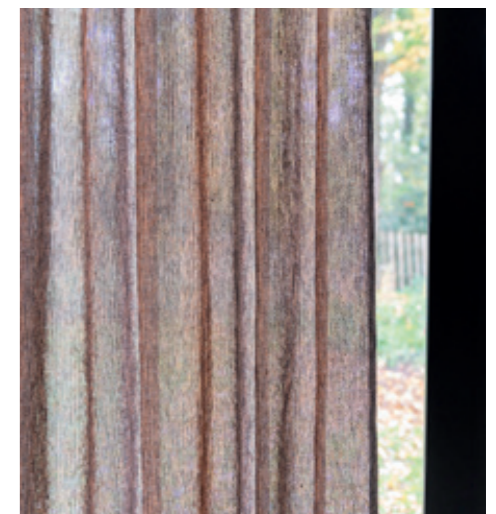
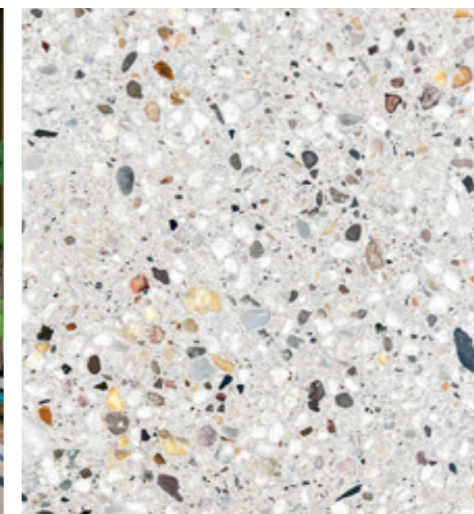
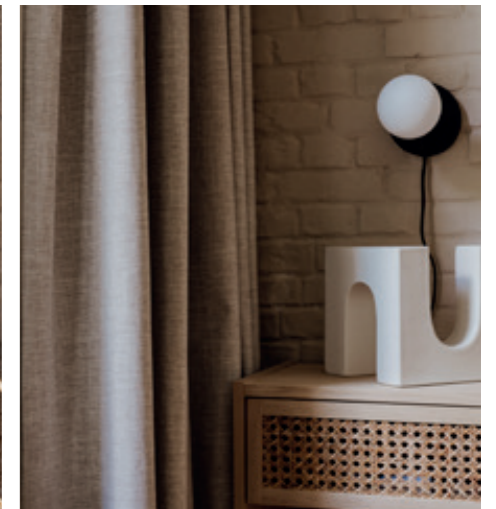
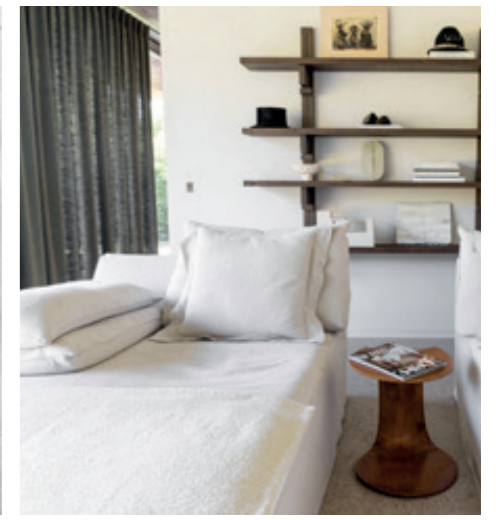
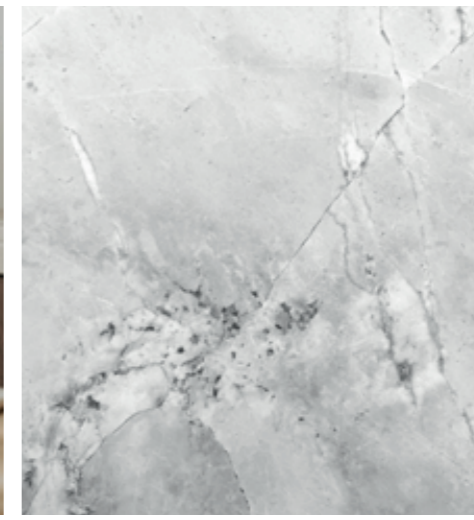
EASE
290 cm



EASE
colour Q3

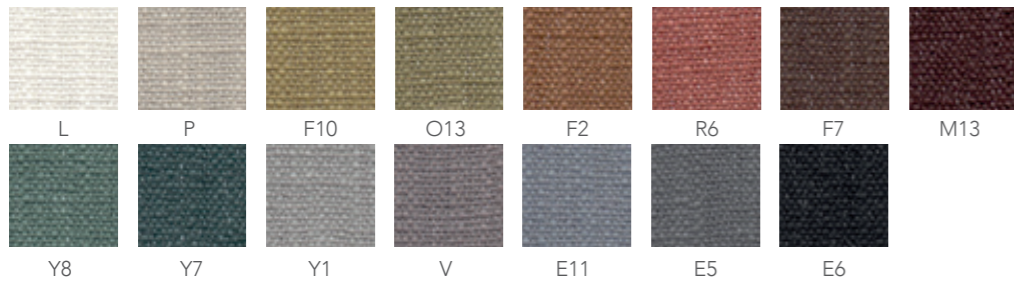


WINK
colour E14





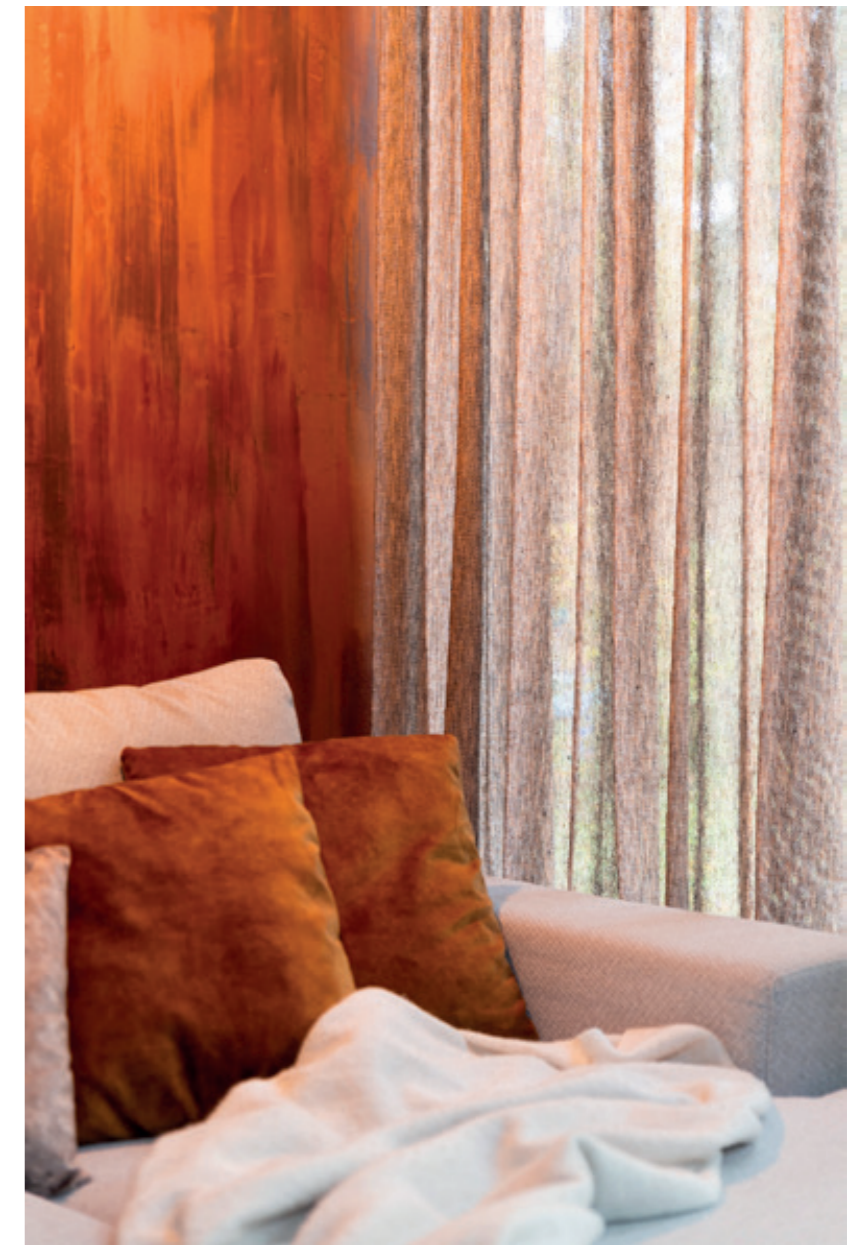
GINKO
colour O13



GINKO

140 cm

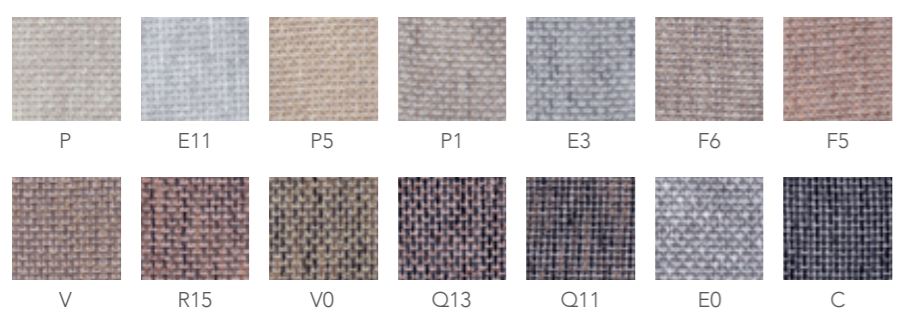




FOUNT
 ↑ 290 cm

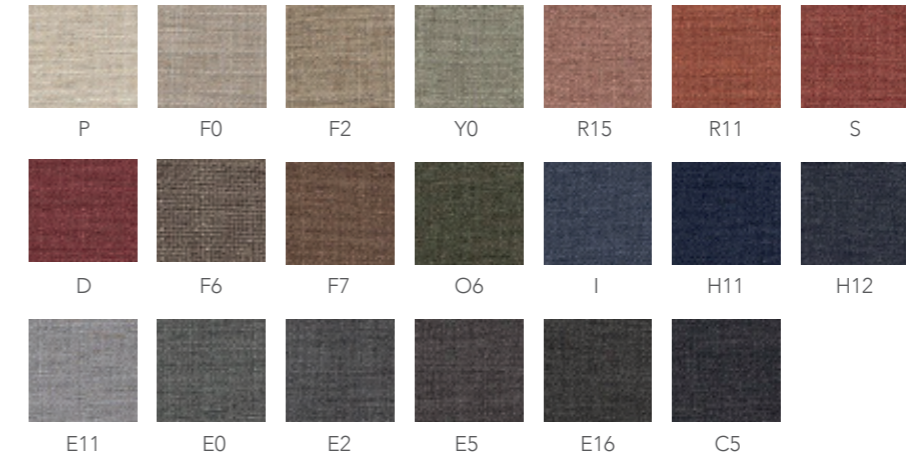


FOUNT
 colour R15







RISE
 ↑ 290 cm




RISE
 colour O6



SOUL
colour F7

SOUL
 ↑ 320 cm





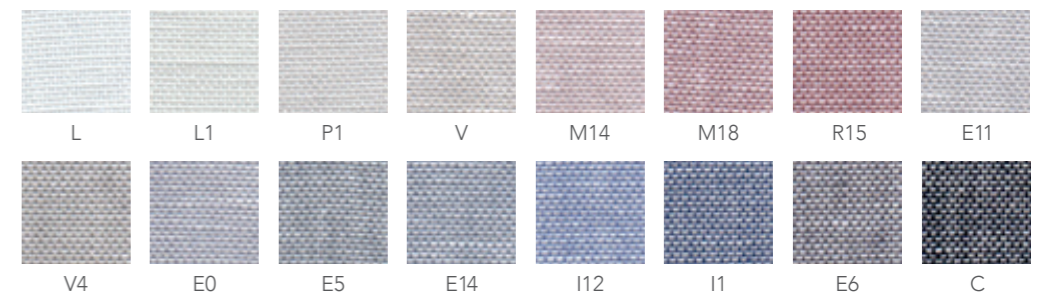
-  P1
-  P5
-  P10
-  E14
-  V
-  F7
-  D2
-  E13
-  E15

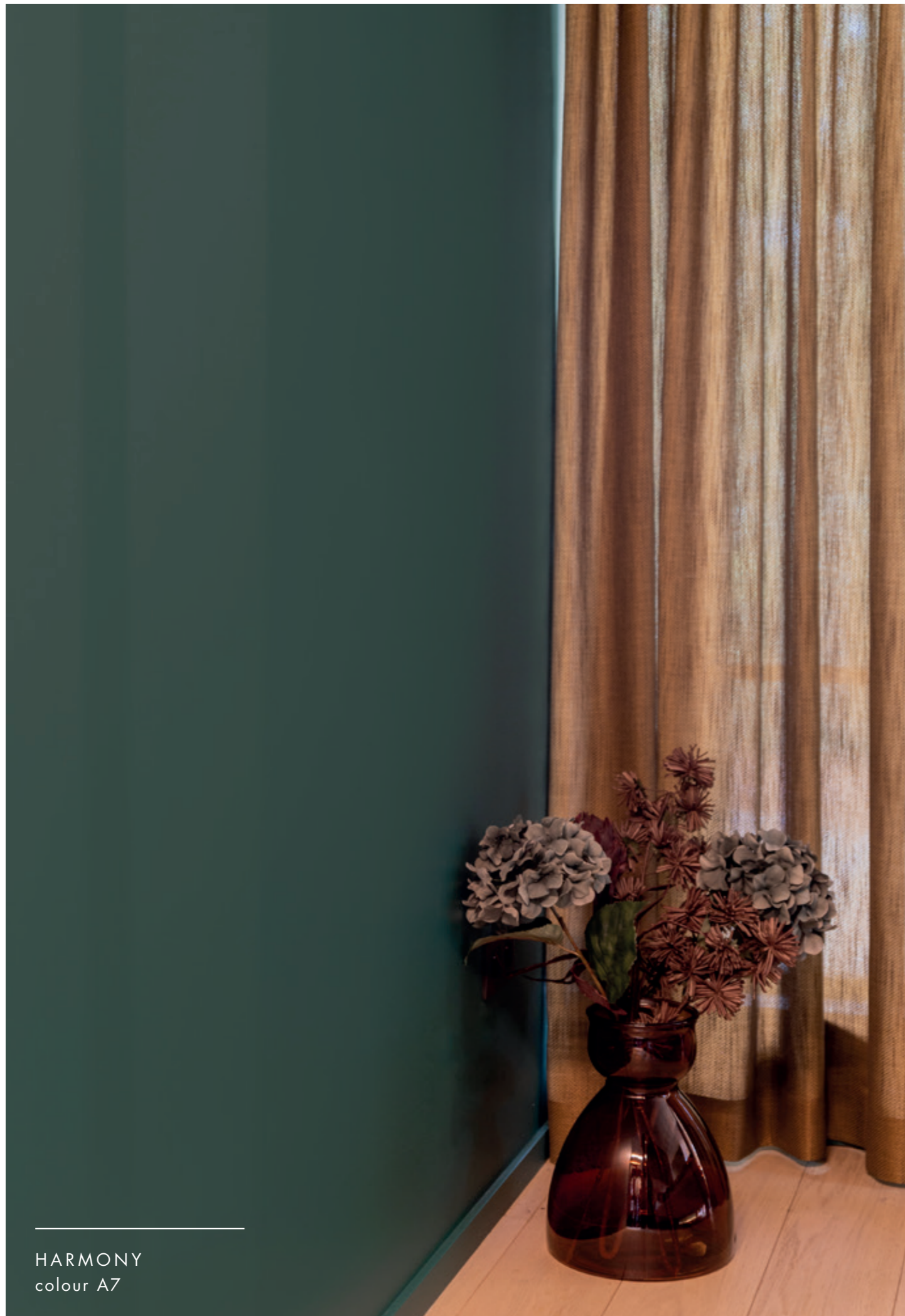


WINK
colour E14

WINK
 ↑ 320 cm







HARMONY
colour A7

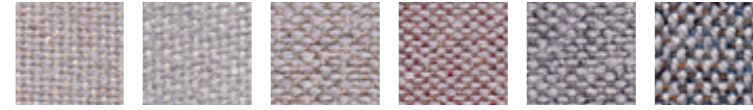
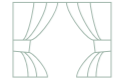


FOUNT
colour R15

TORPOR



300 cm



P10

E11

E1

S1

E5

I1



TORPOR
colour I1

